

# Lone Pine Fly-In Airfield Guide 2025

Rev. D

## Disclaimer:

This information is advisory and meant to be supplementary to a proper briefing and research by the PIC prior to visiting any of these airfields. Private airfields that are Prior Permission Required must be adhered to.

2025 - Rev. D

Photo Credit:  
© Douglas Lumgair





# Amargosa- *Private, PPR*

Elevation: 2100'  
Length: 1900'  
Surface: Dirt  
Ownership: Private, PPR  
Lat/Lon: 36.301771°  
-116.414792°



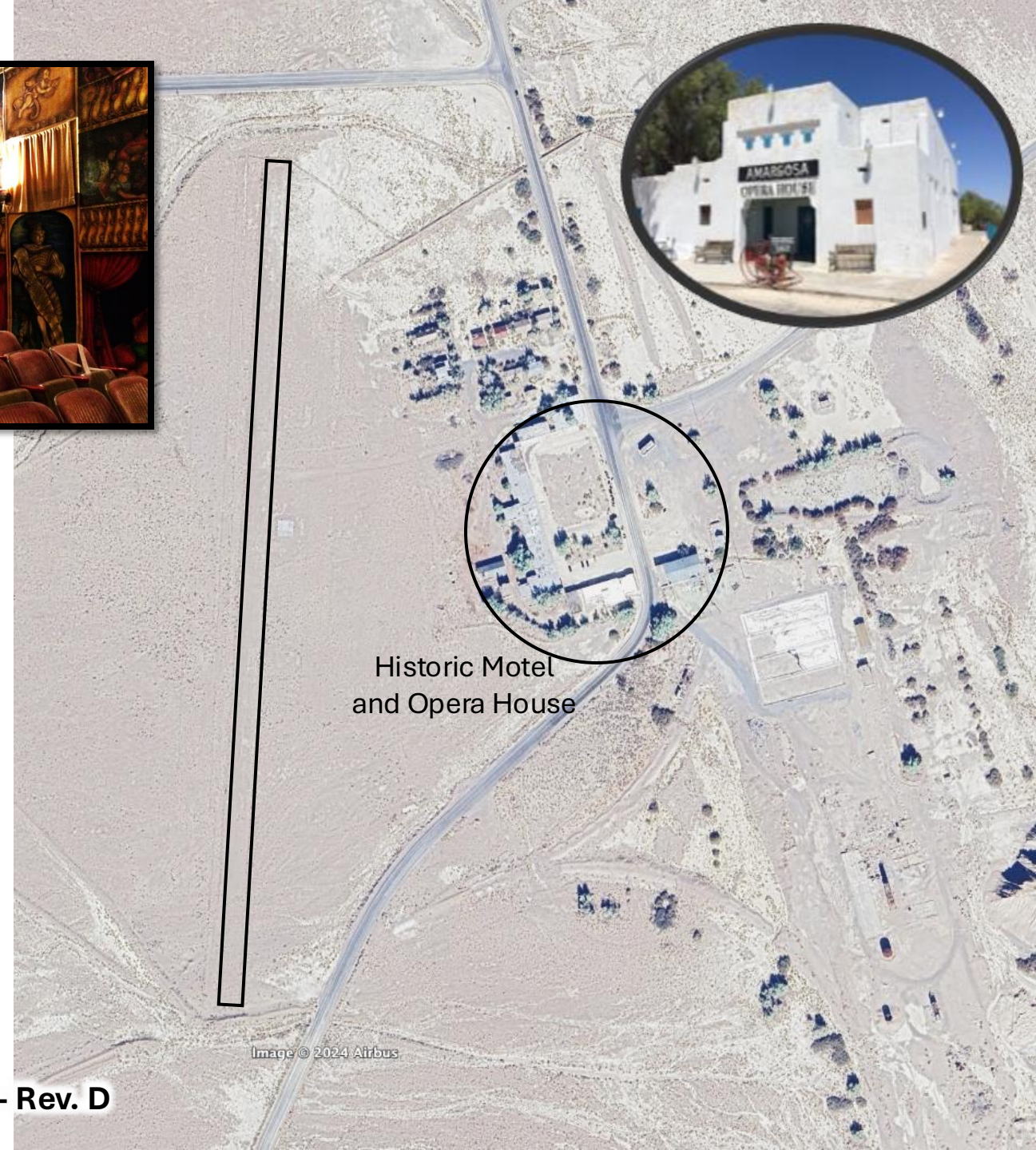
Description:

**Mandatory Call Ahead – NO EXCEPTIONS!**

Amazing place with unique history of Marta Becket and *her* opera house. Research history before calling – only go here if you are there to appreciate the history. They do not like airplanes. For PPR, Front Desk: 760-852-4441



2025 - Rev. D



Historic Motel  
and Opera House

Image © 2024 Airbus



# Ballarat

## Ballarat Ghost Town

Land on NE-SW road or N-S road.

Watch for Road Signs.

Give way to ground vehicles.

Elevation: 1100'  
Length: 2000'  
Surface: Gravel/Dirt Road  
Ownership: BLM  
Lat/Lon: 36.046214°  
-117.230160°

Description:  
Famous ghost town in the Panamint Valley. Land on main dirt road. Be mindful of cars, signs, and other hazards.



DRY LAKE BED

2025 - Rev. D

© 2016 Google

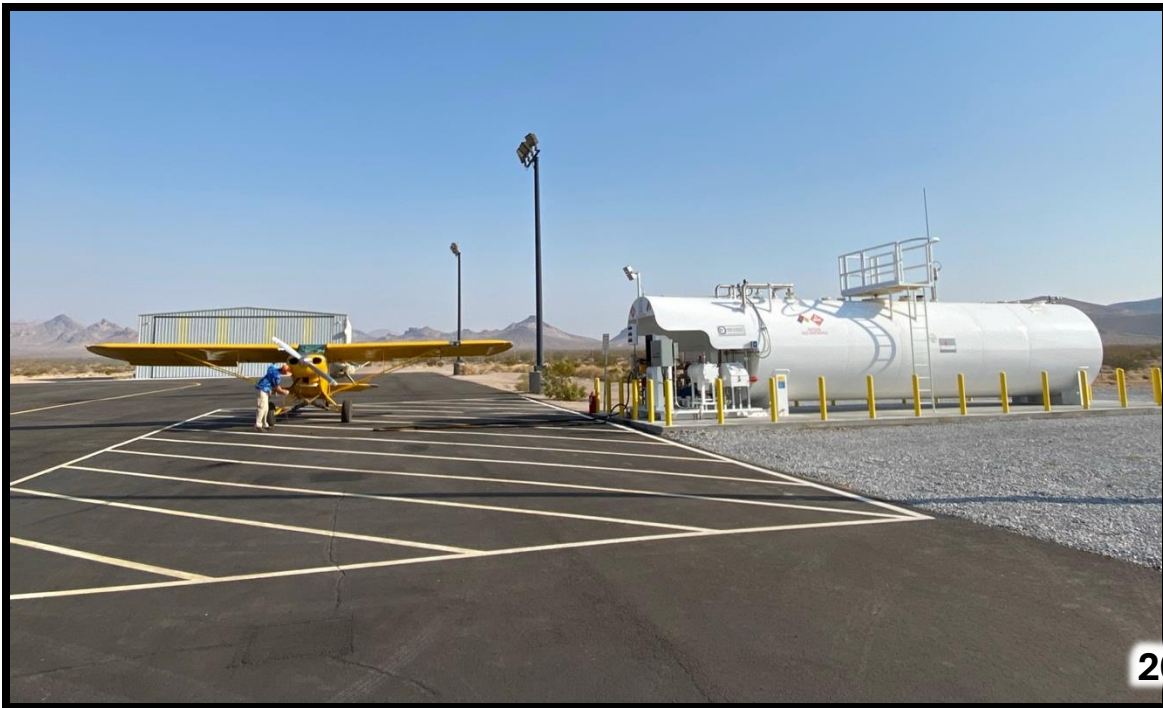




# Beatty (KBTY)

Elevation: 3169'  
Length: 5600'  
Surface: Asphalt, Good  
Ownership: BLM  
Lat/Lon: 36.861641°  
-116.786599°

Description:  
Easy public airport with fuel.



2025 - Rev. D



Image © 2024 Airbus



# Big Pine

Elevation: 3900'  
Length: 1200'  
Surface: Dirt  
Ownership: LADWP  
Lat/Lon: 37.146827°  
-118.239749°

Description:  
Stealth airstrip, very hard to find. Ends marked with tires. May be overgrown this season. Airstrip dates back to before WWII.



2025 - Rev. D



Image © 2024 Airbus



# Bonnie Claire Lake

Elevation: 4000'  
Length: 5000'  
Surface: Dry Lake (Hard)  
Ownership: BLM  
Lat/Lon: 37.167428°  
-117.162199°

## Description:

Large dry lakebed with historical links to military flight test (emergency landing field). Faint marking of large runway.





# Bonnie Claire Mine

Elevation: 4000'  
Length: 2000'  
Surface: Paved Highway  
Ownership: State Road  
Lat/Lon: 37.225543°  
-117.128848°

## Description:

Land on highway, avoid signs, yield to cars.  
Abandoned mill site with interesting ruins.



2025 - Rev. D



Image © 2024 Airbus

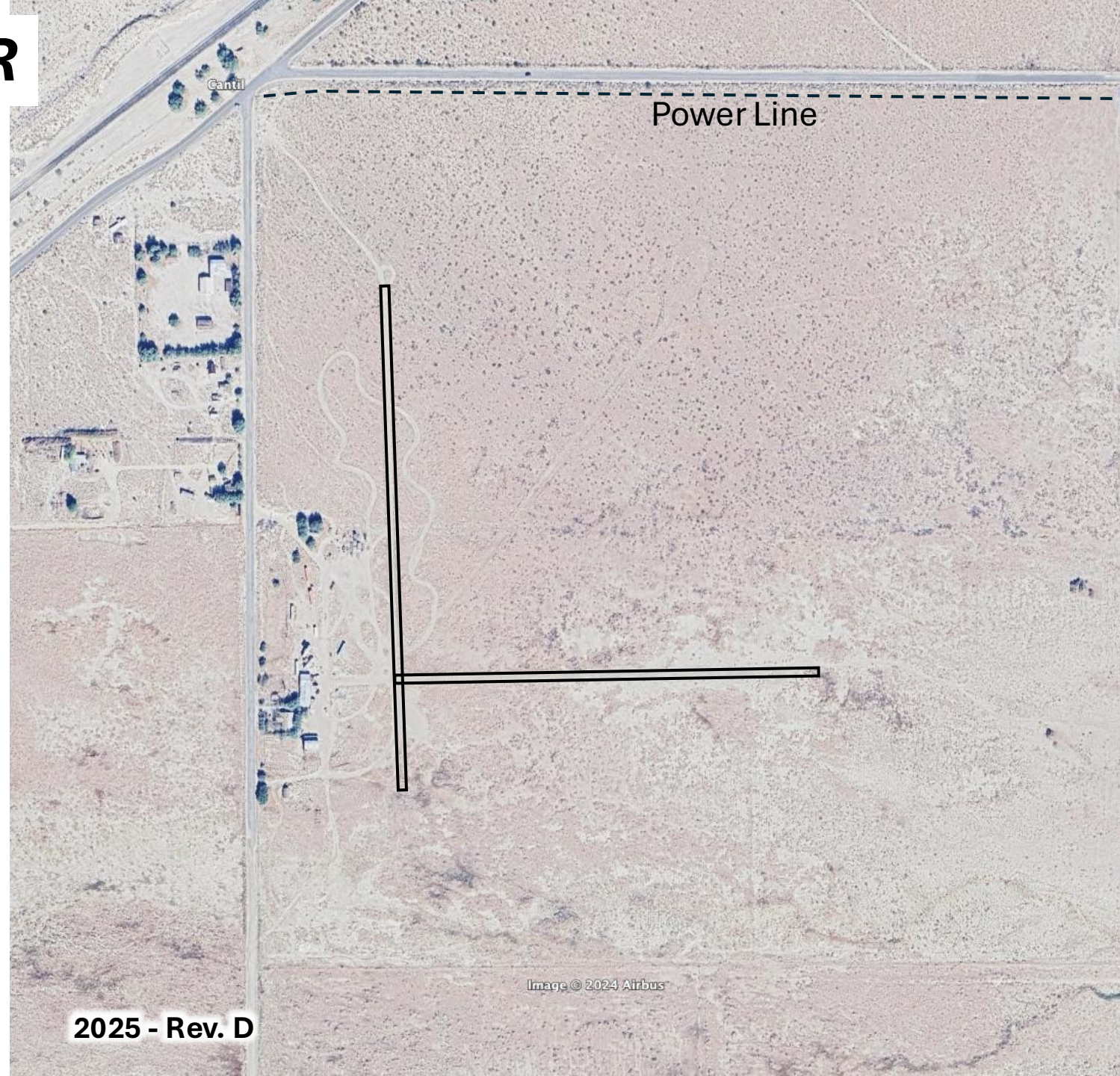


# Burch Ranch – *Private, PPR*

Elevation: 1990'  
Length: 1500'  
Surface: Dirt  
Ownership: Private, PPR  
Lat/Lon: 35.305105°  
-117.964716°

## Description:

Cool desert ranch. Need permission of owner before landing. Some group leads may be able to take their groups here.



2025 - Rev. D



# Burnt Corral – *Private, PPR*

Elevation: 6200'  
Length: 800'  
Surface: Dirt (Soft)  
Ownership: Private, PPR  
Lat/Lon: 36.224889°  
-118.496421°

Description:  
Sierra Nevada inholding with a very technical  
airstrip. Private to members and their guests.



Image © 2024 Maxar Technologies



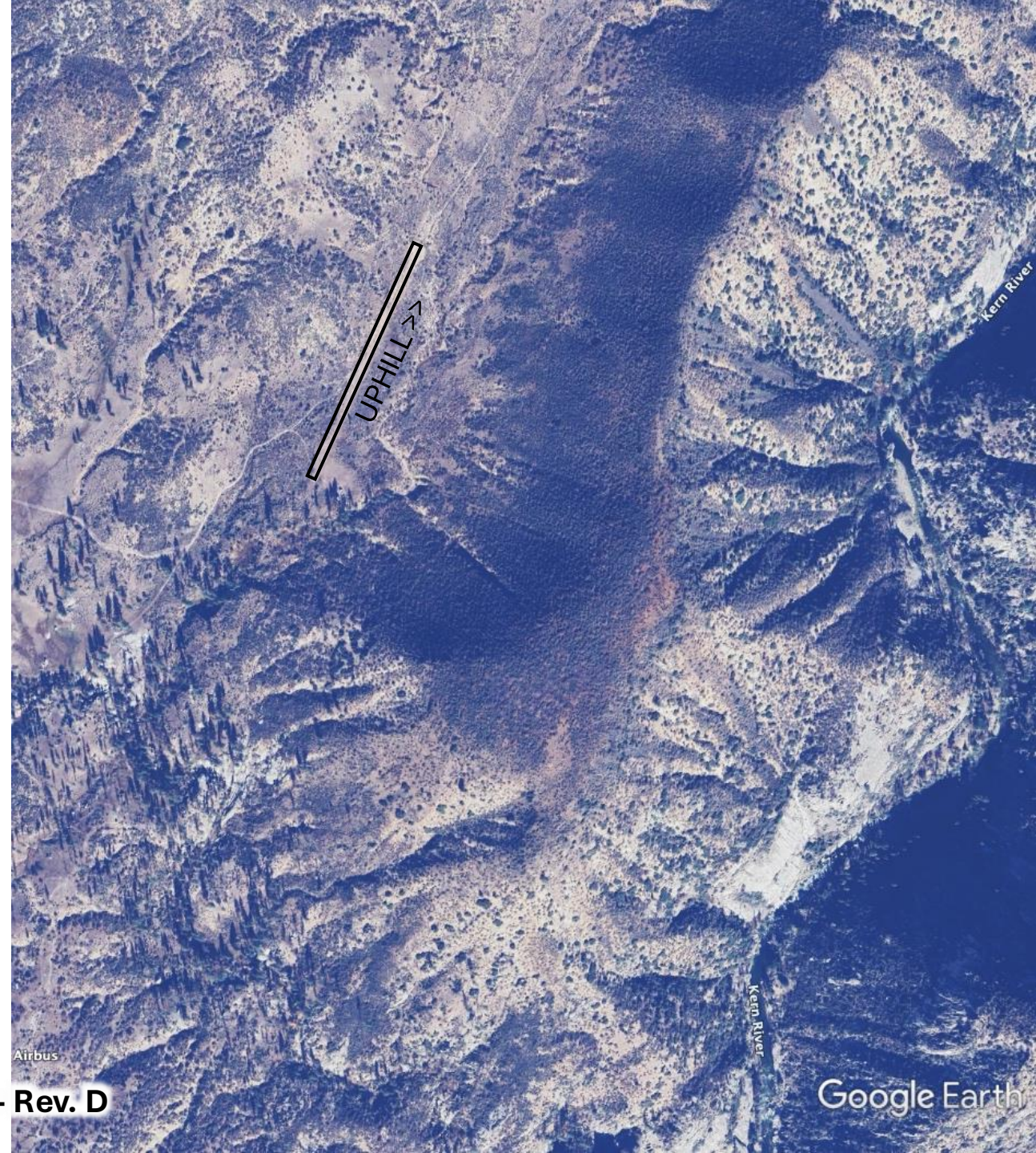
# Carvers Cut – *Private, PPR*

Elevation: 4500'  
Length: 1400'  
Surface: Dirt  
Ownership: Private, PPR  
Lat/Lon: 36.006186°  
-118.490928°

Description:  
Sierra Nevada inholding with a very technical  
airstrip. Private to members and their guests.



2025 - Rev. D

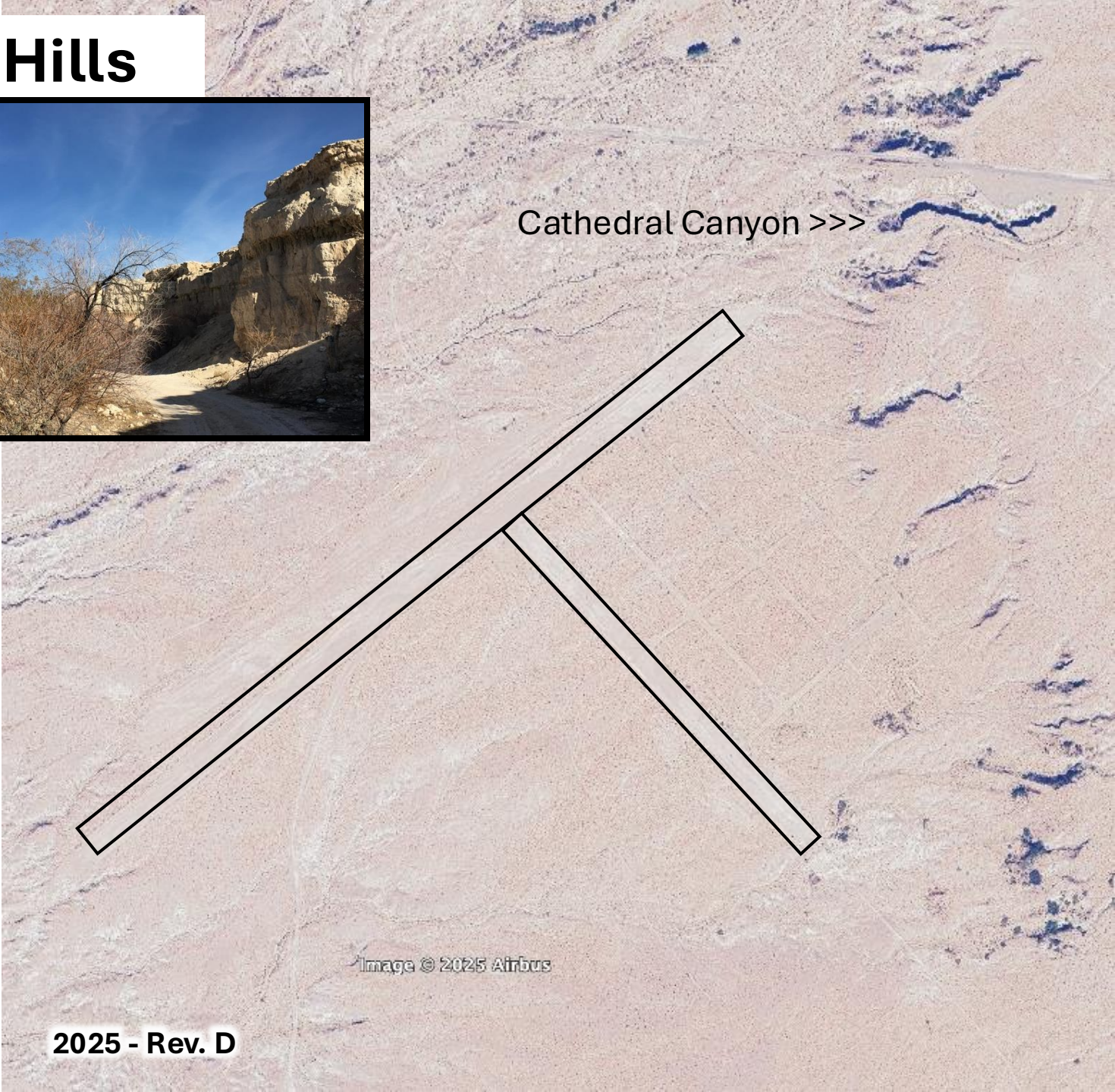




# Cathedral Canyon/ Hidden Hills

Elevation: 2800'  
Length: 4000'  
Surface: Dirt  
Ownership: Private – Open Lan  
Lat/Lon: 36.006880°  
-115.862238°

Description:  
Unfinished airport development. Nearby is an abandoned religious monument known as Cathedral Canyon. Runways not maintained.





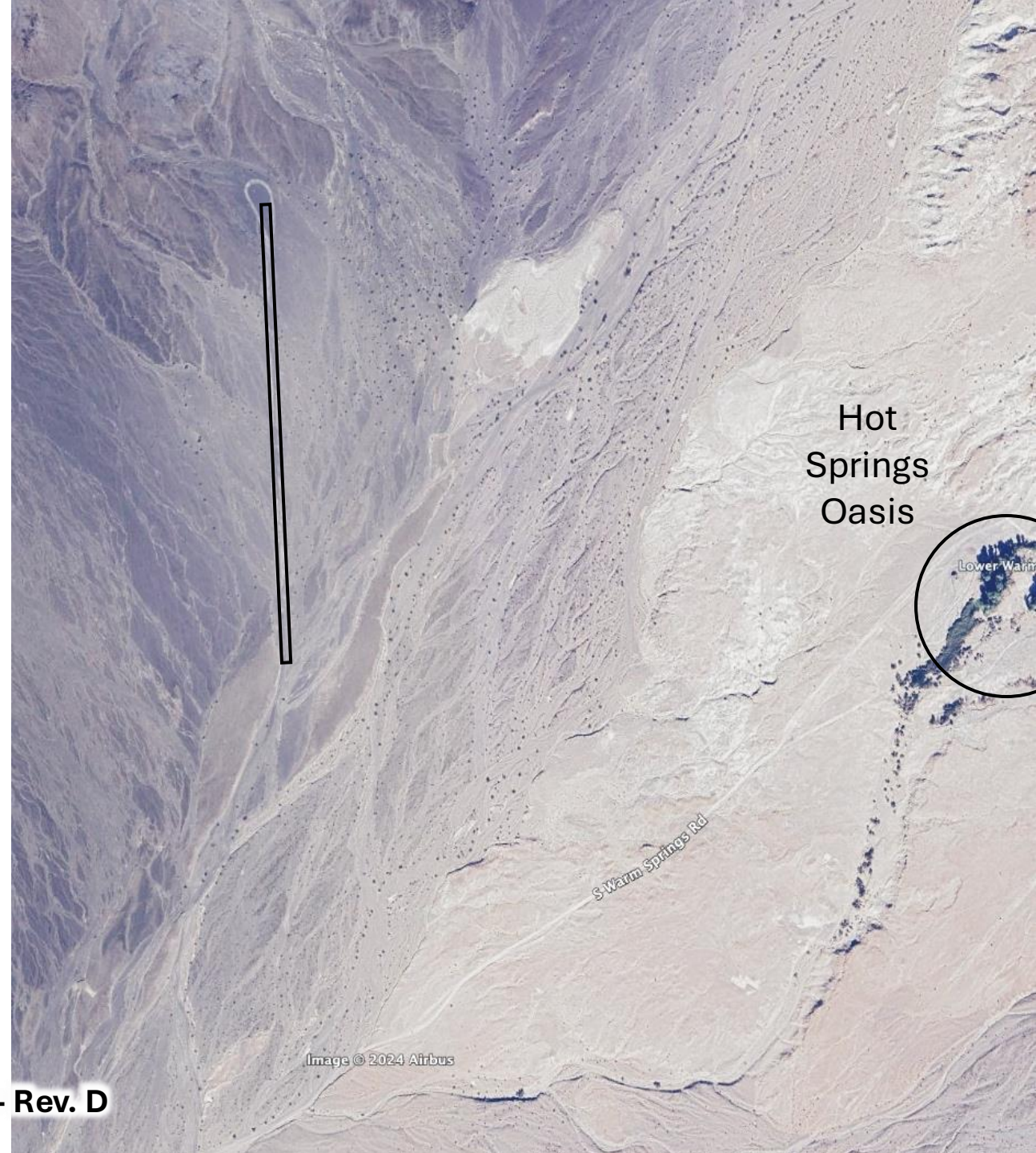
# Chicken Strip

Elevation: 1400'  
Length: 1300'  
Surface: Dirt  
Ownership: NPS  
Lat/Lon: 36.805540°  
-117.780511°

Description:  
Famous hot springs. Easy strip, but still has claimed a lot of planes! In the National Park.



2025 - Rev. D





# Cinder Cone



RESTRICTED  
R-2505

Elevation: 3300'  
Length: 2200'  
Surface: Dry Lake  
Ownership: BLM  
Lat/Lon: 35.982256°  
-117.900271°

Description:  
Easy dry lake. Great starter spot.  
Be sure to hike down to **Fossil Falls!**

2025 - Rev. D



# Coso Junction

Elevation: 3400'  
Length: 1400'  
Surface: Dry Lake  
Ownership: BLM  
Lat/Lon: 36.040511°  
-117.934706°

Description:  
Small dry lake with a windsock. Good short-field practice!



2025 - Rev. D



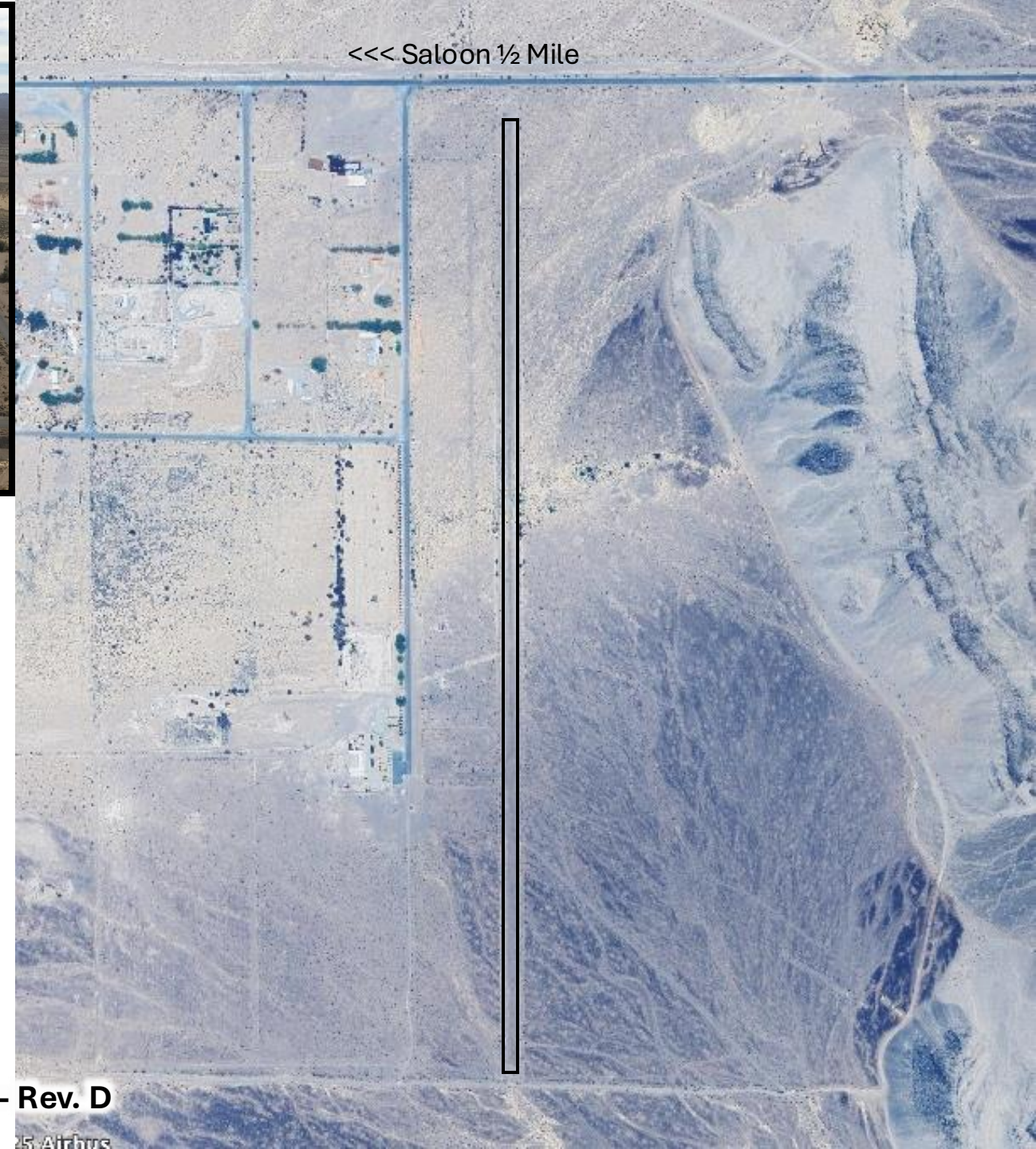
Image © 2024 Airbus



# Crystal

Elevation: 2400'  
Length: 4000'  
Surface: Asphalt/Dirt  
Ownership: BLM  
Lat/Lon: 36.485989°  
-116.155507°

Description:  
Old airstrip to access the (now closed) “establishments” in town. Park in bushes as north end and walk 1/2 mile west to Miss Kathy’s Short Branch Saloon which may still have lunch.





# Darwin

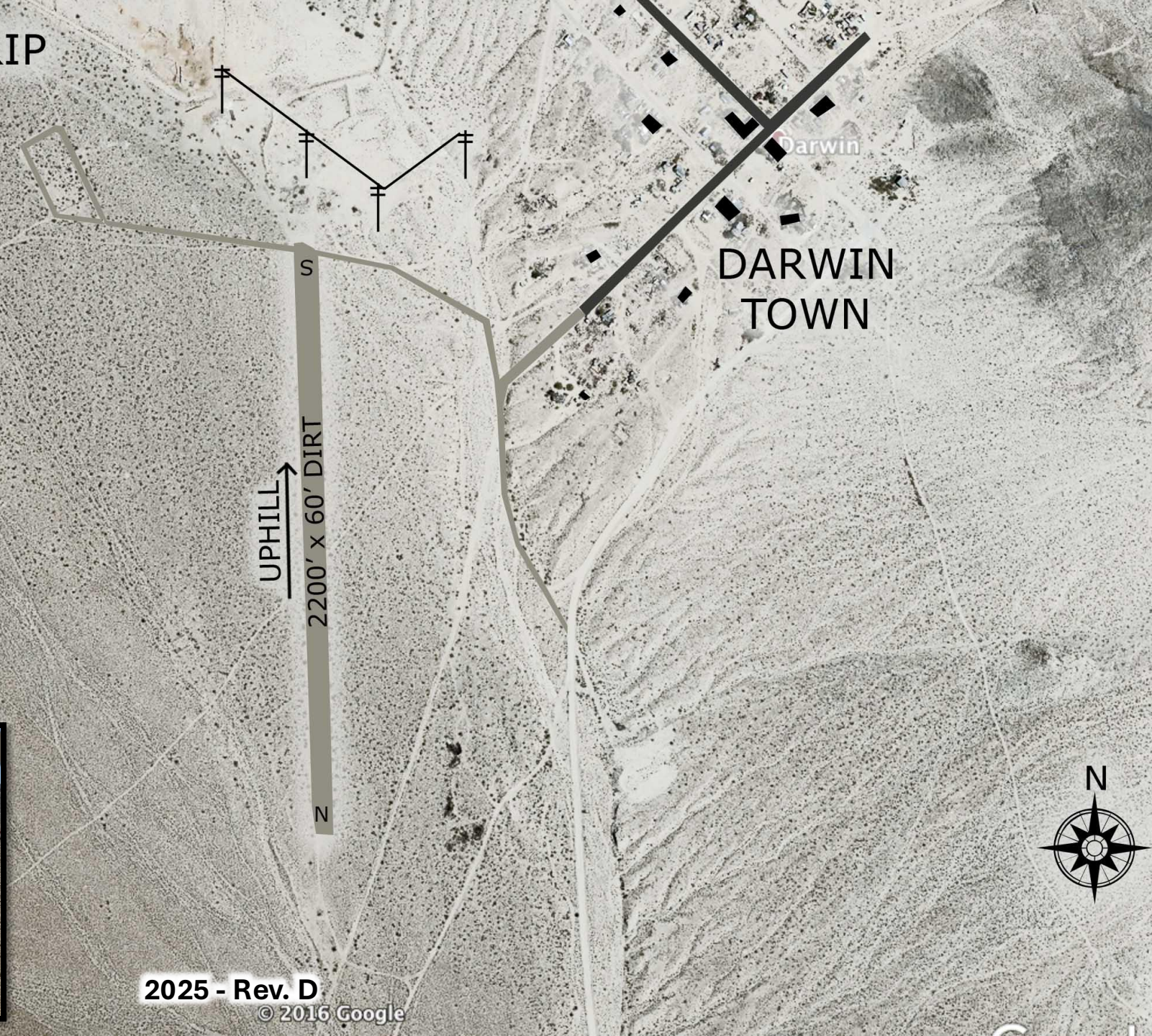
## DARWIN AIRSTRIP

Recomend depart downhill  
on South runway

Elevation: 4700'  
Length: 1700'  
Surface: Dirt  
Ownership: BLM  
Lat/Lon: 36.264255°  
-117.598031°

### Description:

One way dirt strip. Be careful of tailwind  
departures in afternoons. Interesting  
town with some friendly locals.





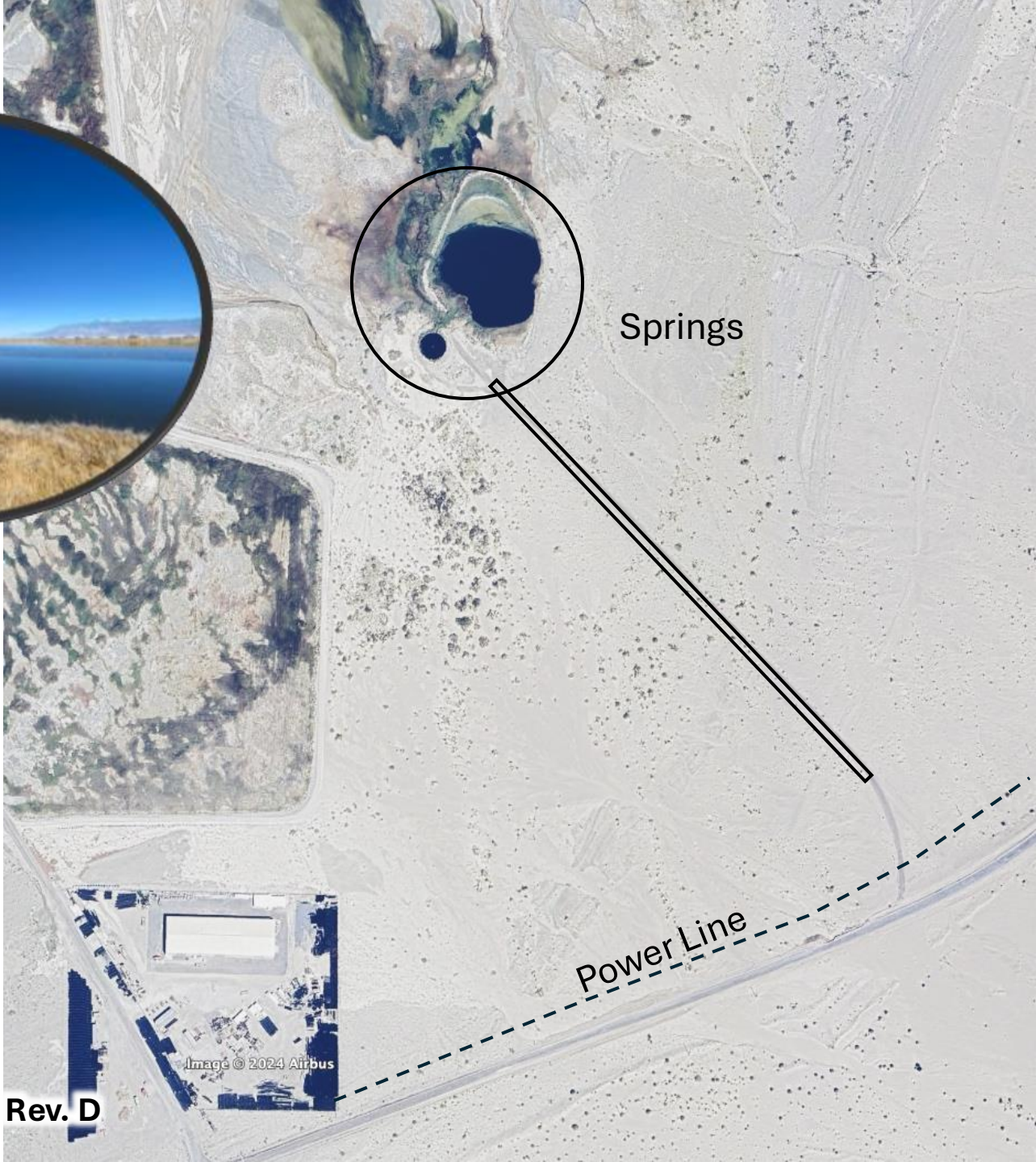
# Dirty Socks Hot Springs

Elevation: 3600'  
Length: 1300'  
Surface: Asphalt/Dirt  
Ownership: ???  
Lat/Lon: 36.328181°  
-117.947878°

Description:  
Tight spot due to power lines at south end.  
Very narrow. Hot springs are icky.



2025 - Rev. D





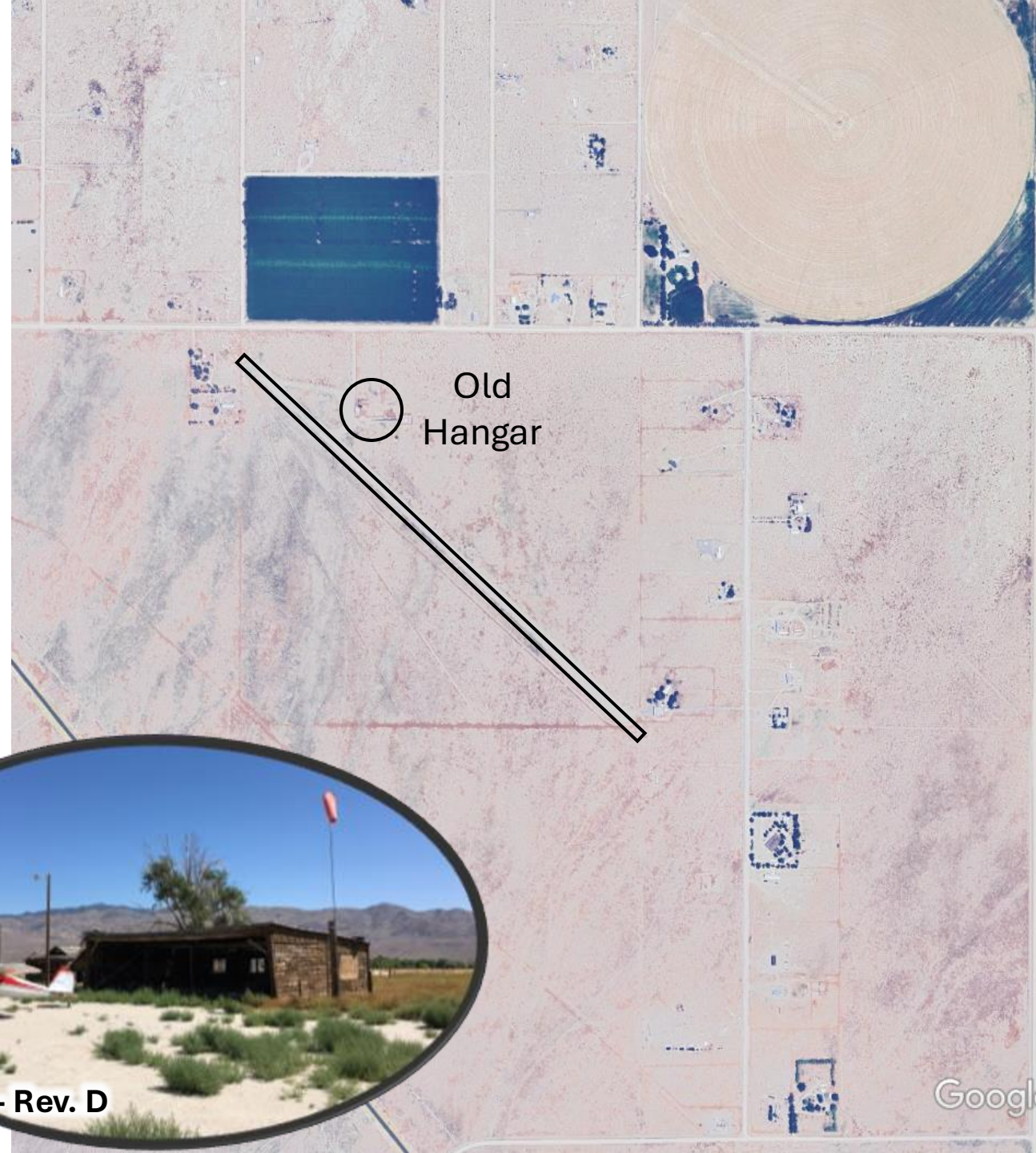
# Dyer (2Q9)

Elevation: 4899'  
Length: 2900'  
Surface: Dirt (Soft Spots)  
Ownership: BLM  
Lat/Lon: 37.609619°  
-118.007535°

Description:  
Chartered airport. Runway can be soft. Interesting setting.



2025 - Rev. D





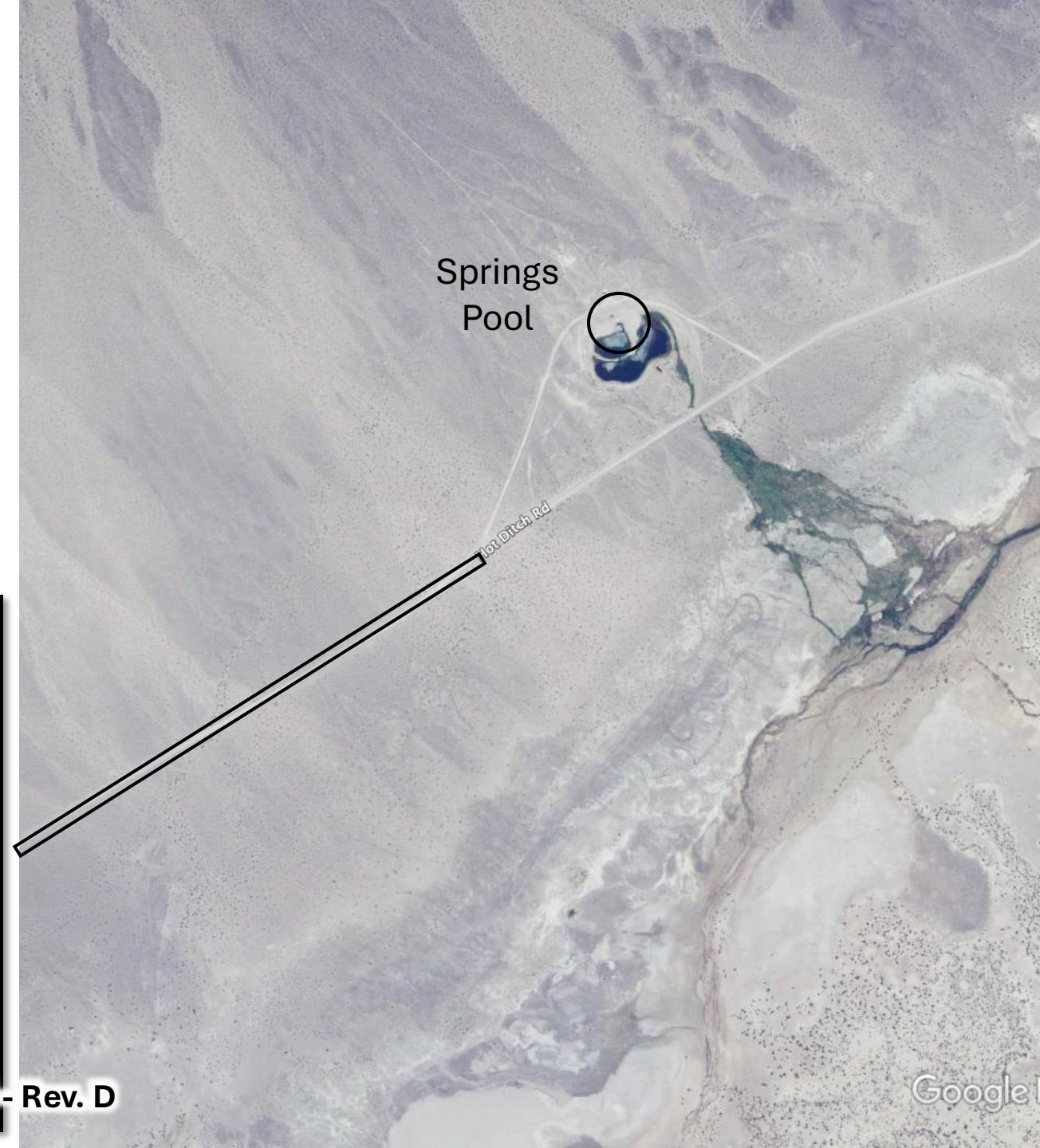
# Fish Lake Warm Springs

Elevation: 4800'  
Length: 2000'  
Surface: Dirt Road  
Ownership: BLM  
Lat/Lon: 37.858972°  
-117.984448°

Description:  
Dirt road landing. Access to nice developed warm spring pool. Tranquil lake with wildlife.



2025 - Rev. D



Google



# Furnace Creek (L06)

Elevation: -210'  
Length: 3000'  
Surface: Asphalt (Poor)  
Ownership: NPS  
Lat/Lon: 36.462619°  
-116.880427°

Description:  
Pavement in poor shape. In Death Valley National Park. Very nice lodging and restaurant nearby. No camping at airport.



2025 - Rev. D





# Gold Point

Elevation: 5300'  
Length: 3500'  
Surface: Dirt, Plant Life  
Ownership: BLM  
Lat/Lon: 37.361567°  
-117.368927°

## Description:

Uphill landing – no late go-around! Narrow due to plant life. Berm on east edge. Historic ghost town, be sure to visit Hornsilver Saloon



2025 - Rev. D

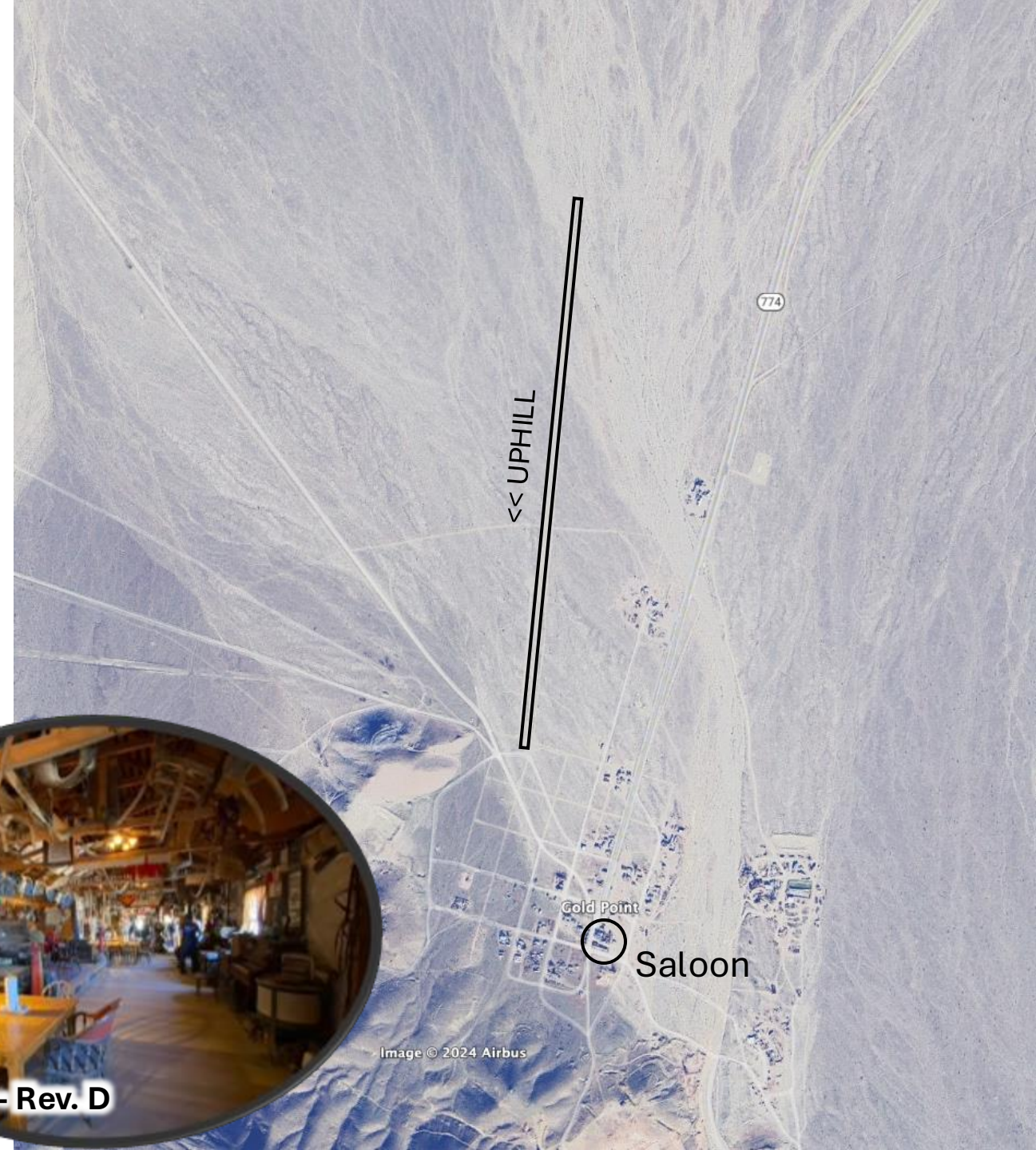


Image © 2024 Airbus



# Goldfield (1A8)

Elevation: 5616'  
Length: 3100'  
Surface: Compacted Dirt  
Ownership: BLM  
Lat/Lon: 37.720170°  
-117.236985°

Description:  
Chartered airport. Uphill dirt strip. Southbound departure not recommended. Very interesting historic town.



2025 - Rev. D

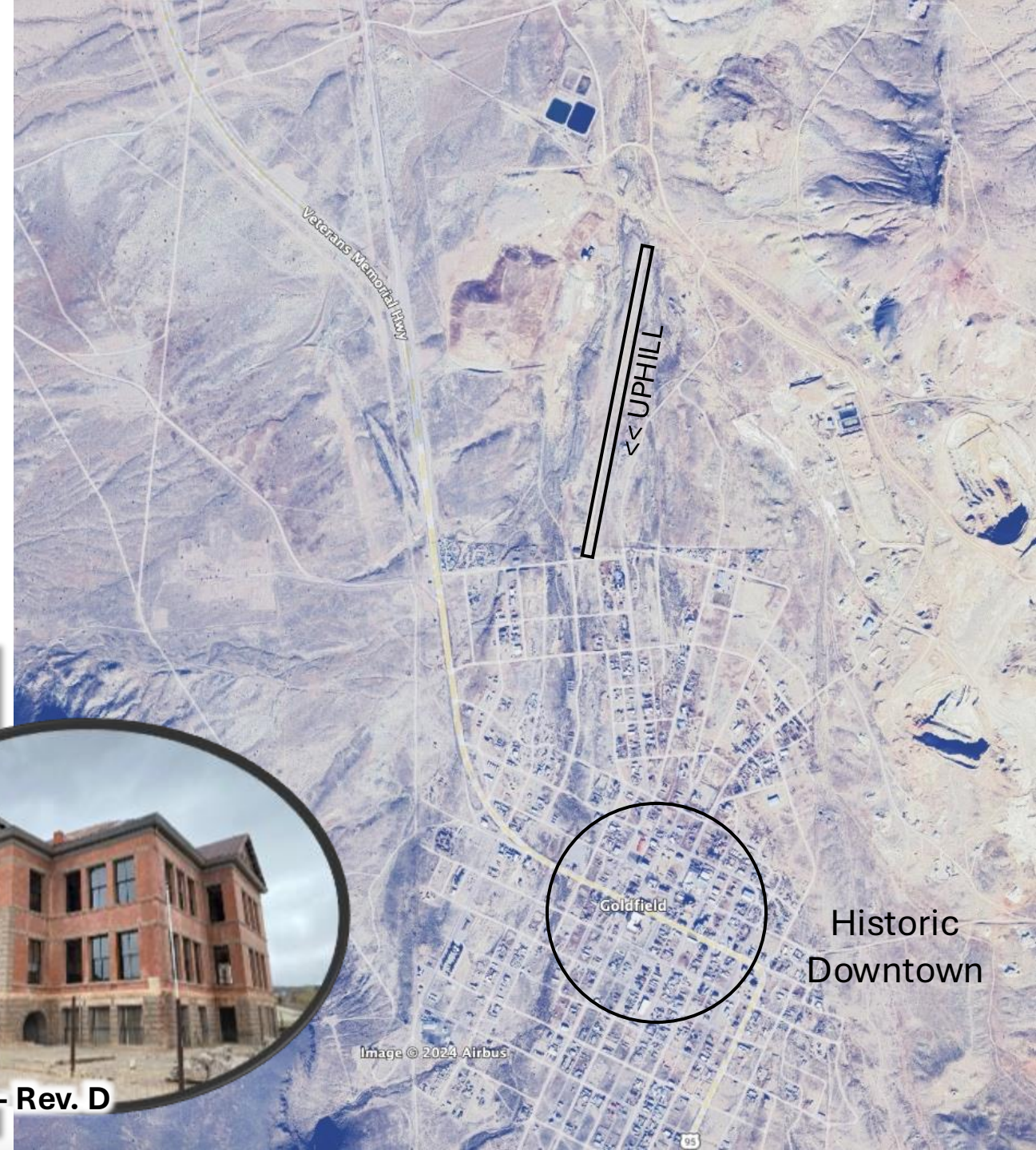


Image © 2024 Airbus



# Goler Heights

Airstrip sits in a bowl with a box canyon to the east. Recommend land and takeoff to West, winds permitting.

Runway surface is lakebed.  
Do not land if wet.

Watch for OHV activity.

GOLER HEIGHTS  
HOMESTEAD

CABIN

RUINS

HILLS

BOX CANYON

SINK HOLES

RIDGE LINE

1800' x 50'

Elevation: 2500'  
Length: 1800'  
Surface: Dry Lake (Silty)  
Ownership: BLM  
Lat/Lon: 35.426963°  
-117.735112°

Description:  
Good starter strip. But getting a bit rough. Very silty. Interesting hiking.



2025 - Rev. D



# Holland Camp

Elevation: 3300'  
Length: 1100'  
Surface: Dirt/Rock  
Ownership: BLM  
Lat/Lon: 35.460661°  
-117.794289°

Description:  
Very technical airstrip. Beautiful setting. Interesting mining ruins. Windssock.

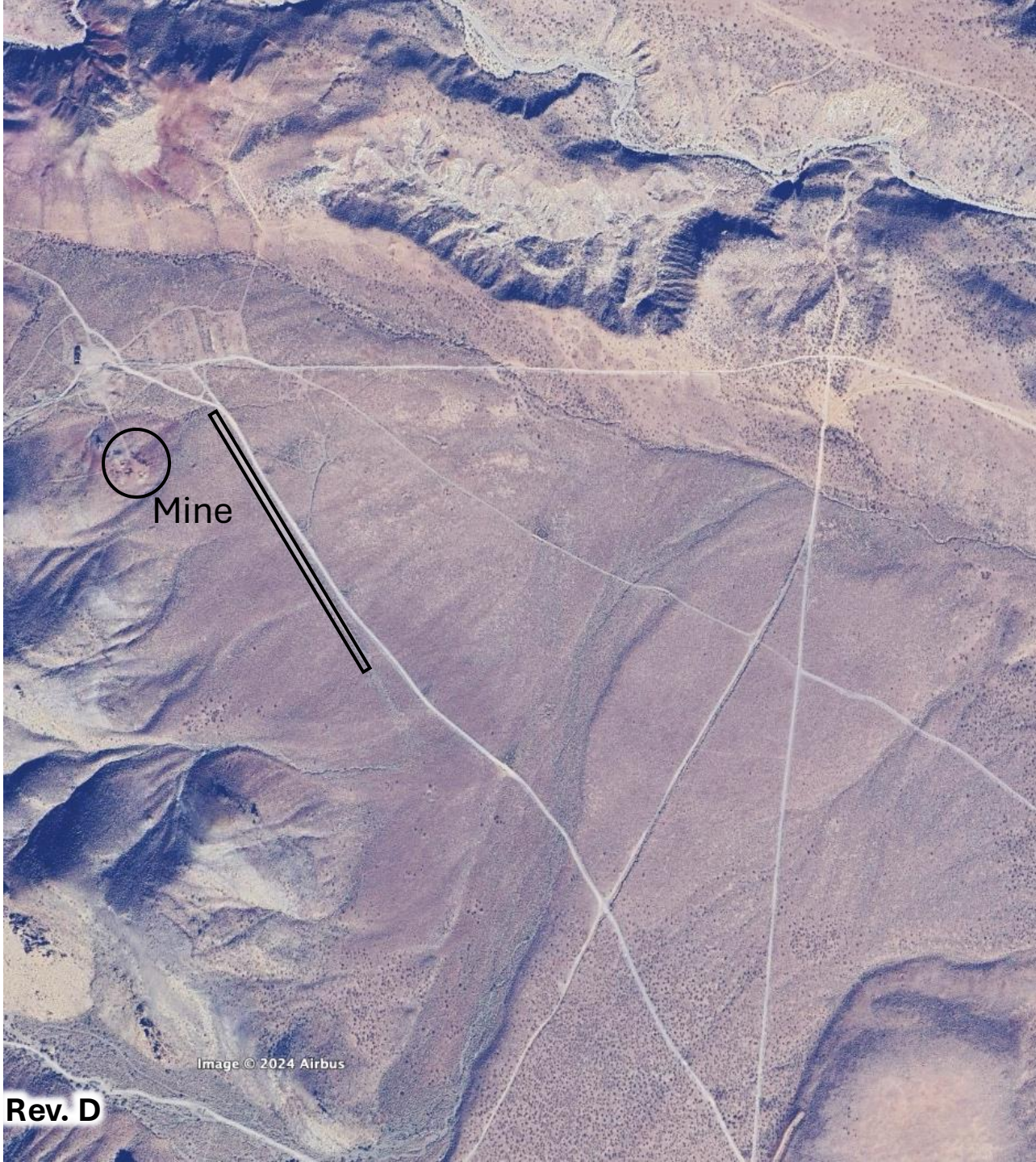


Image © 2024 Airbus



# Horton Ranch – Private, PPR

Elevation: 6100'  
Length: 2000'  
Surface: Dirt (Soft)  
Ownership: Private, PPR  
Lat/Lon: 35.994186°  
-118.134595°

Description:  
One-way steep-uphill technical strip. Recently re-opened.  
Access to South Fork of Kern River.



2025 - Rev. D





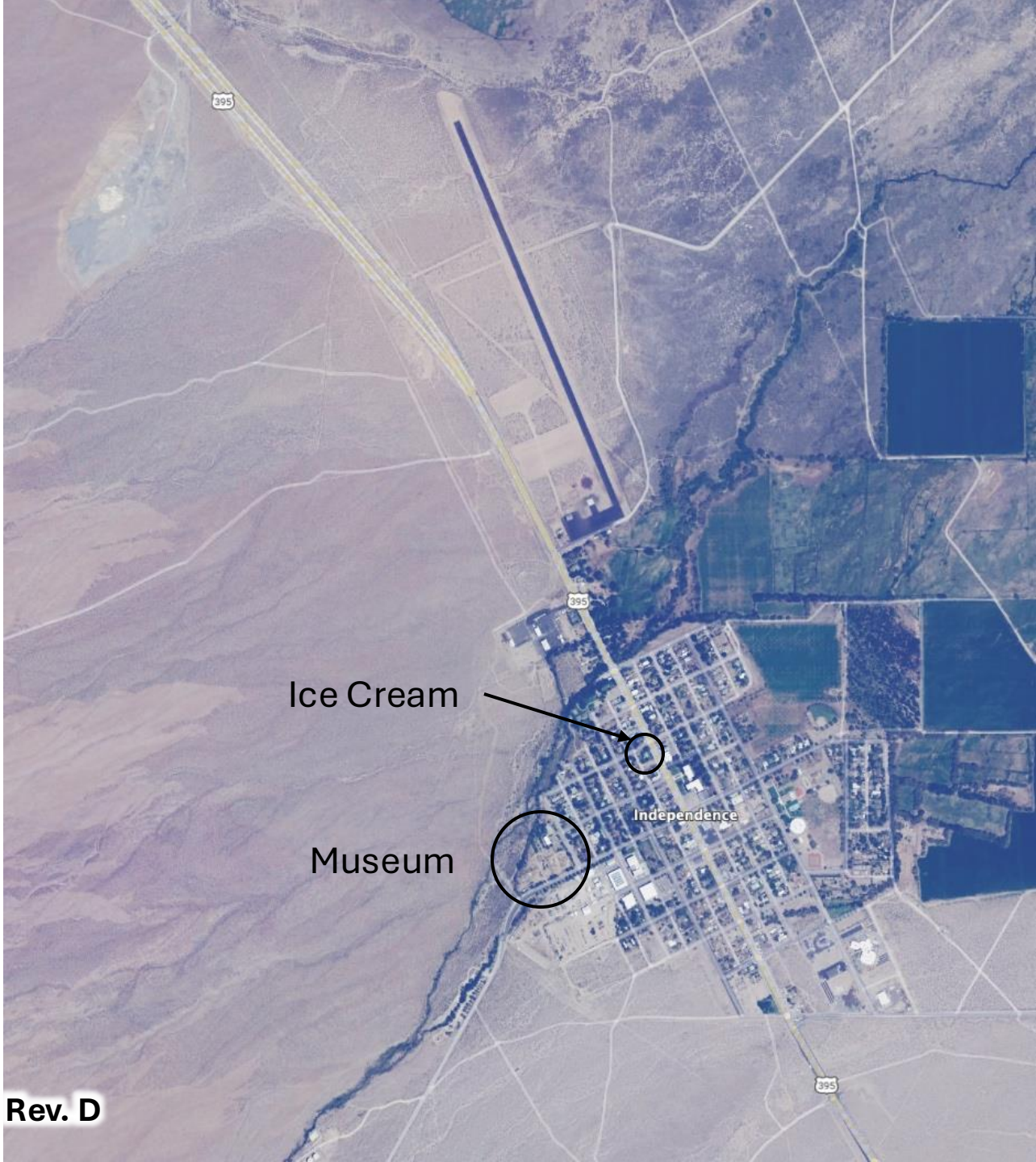
# Independence (207)

Elevation: 3908'  
Length: 3500'  
Surface: Asphalt  
Ownership: Inyo Couty  
Lat/Lon: 36.815990°  
-118.205835°

Description:  
Ice Cream! Short walk down 395 to the **Eastern Sierra Ice Cream Company**.  
And the Eastern California Museum, home of the operational Southern Pacific #18 steam locomotive.



2025 - Rev. D





# Jackass

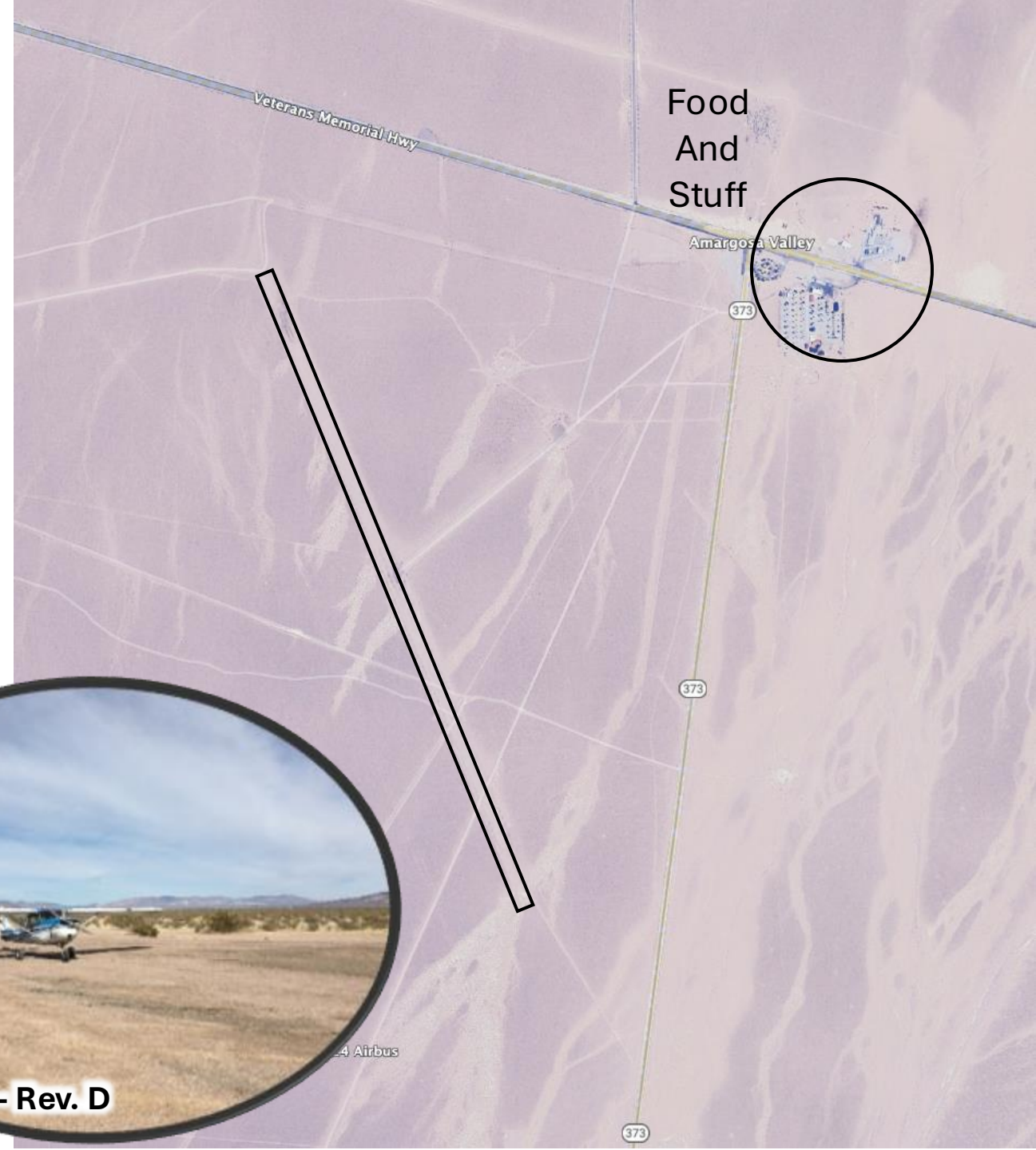
Elevation: 2600'  
Length: 5000'  
Surface: Asphalt/Dirt  
Ownership: BLM  
Lat/Lon: 36.632931°  
-116.412964°

## Description:

Very smooth and wide. Can walk over to several gas stations and famous Alien “establishment”.



2025 - Rev. D

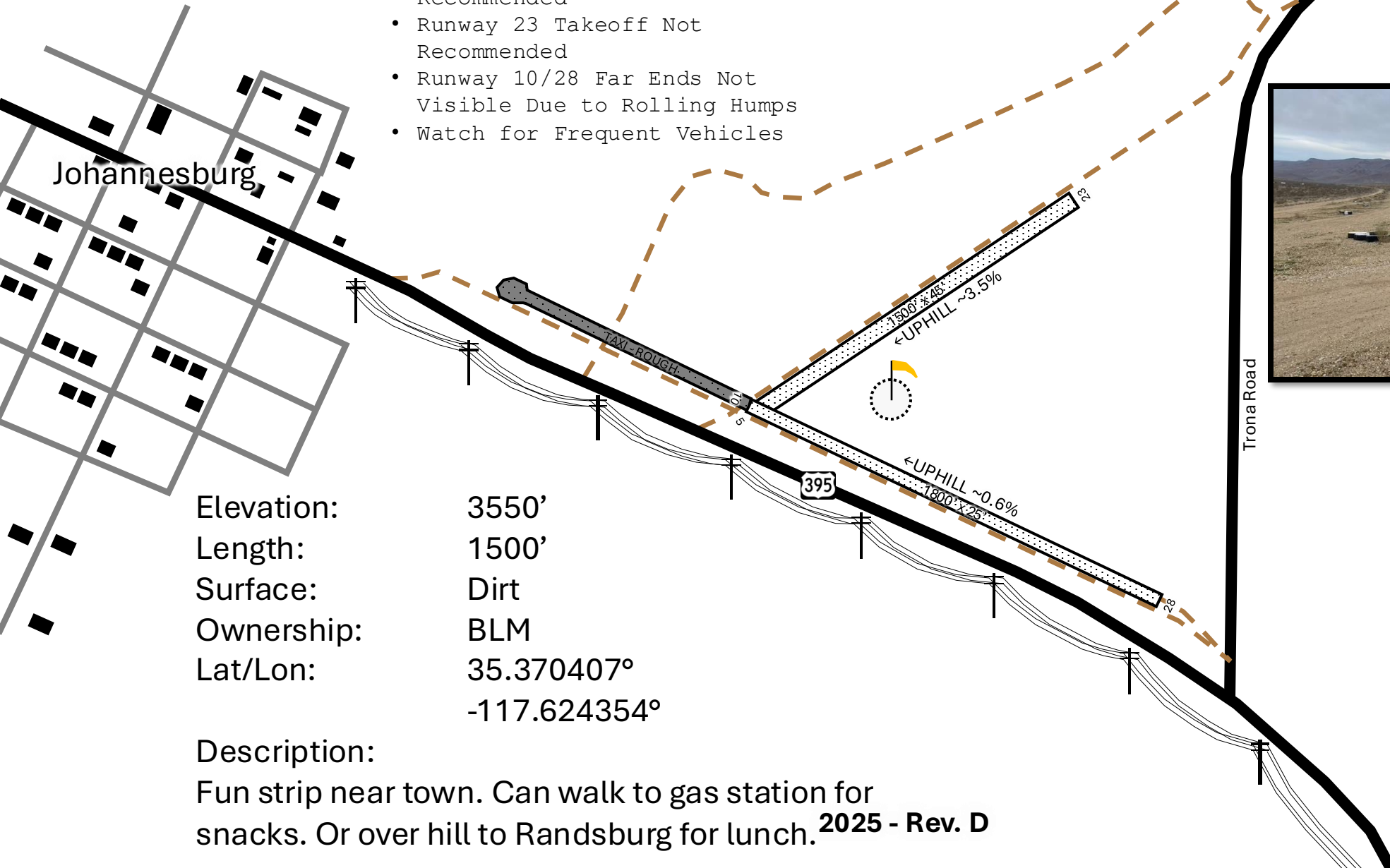




# Johannesburg

## Remarks:

- Runway 5 Landing Not Recommended
- Runway 23 Takeoff Not Recommended
- Runway 10/28 Far Ends Not Visible Due to Rolling Humps
- Watch for Frequent Vehicles



Elevation: 3550'  
Length: 1500'  
Surface: Dirt  
Ownership: BLM  
Lat/Lon: 35.370407°  
-117.624354°

## Description:

Fun strip near town. Can walk to gas station for snacks. Or over hill to Randsburg for lunch.

2025 - Rev. D

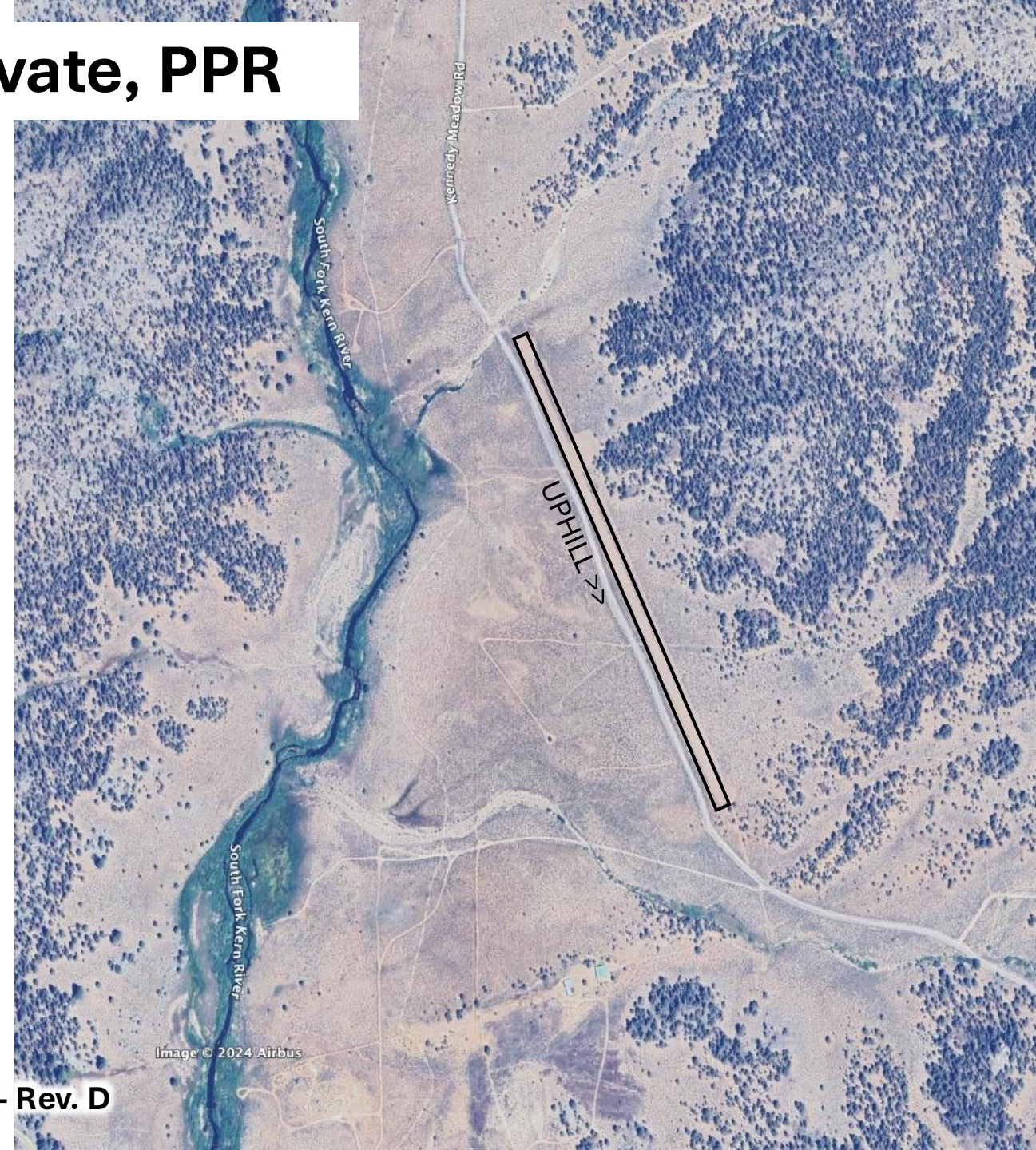




# Kennedy Meadows Ranch - Private, PPR

Elevation: 6100'  
Length: 2600'  
Surface: Dirt (Soft)  
Ownership: Private, PPR  
Lat/Lon: 36.032098°  
-118.129273°

Description:  
Private to owners, members, and their guests.





# L Cubed

Elevation: 3200'  
Length: 1400'  
Surface: Dirt/Field  
Ownership: BLM  
Lat/Lon: 35.478805°  
-117.751653°

Description:  
Off airport spot. Landing uphill on field  
just left of road. Watch out for big rocks.



Image © 2024 Airbus

2025 - Rev. D

Google Earth



# Lida Junction (0L4)

Elevation: 4684'  
Length: 6100'  
Surface: Compacted Dirt  
Ownership: BLM  
Lat/Lon: 37.492593°  
-117.188422°

Description:  
Chartered airport. Easy long dirt strip. No facilities  
(burned down).



2025 - Rev. D



Image © 2024 Airbus



# Manzanar

Elevation: 3800'  
Length: 5000'  
Surface: Asphalt  
Ownership: LADWP  
Lat/Lon: 36.741756°  
-118.152523°

Description:  
Abandoned WWII training airfield. Massive runway.  
Watch out for plant life. Only one runway is usable.  
Manzanar Internment Camp historic site on other side  
of highway.





# Minnietta Mine

Elevation: 2400'  
Length: 1100'  
Surface: Dirt/Rock  
Ownership: BLM  
Lat/Lon: 36.244800°  
-117.415751°

Description:  
Very technical strip. Middle is badly washed out, so land on preferred half.  
Rocky. Neat cabin to hike to as well.

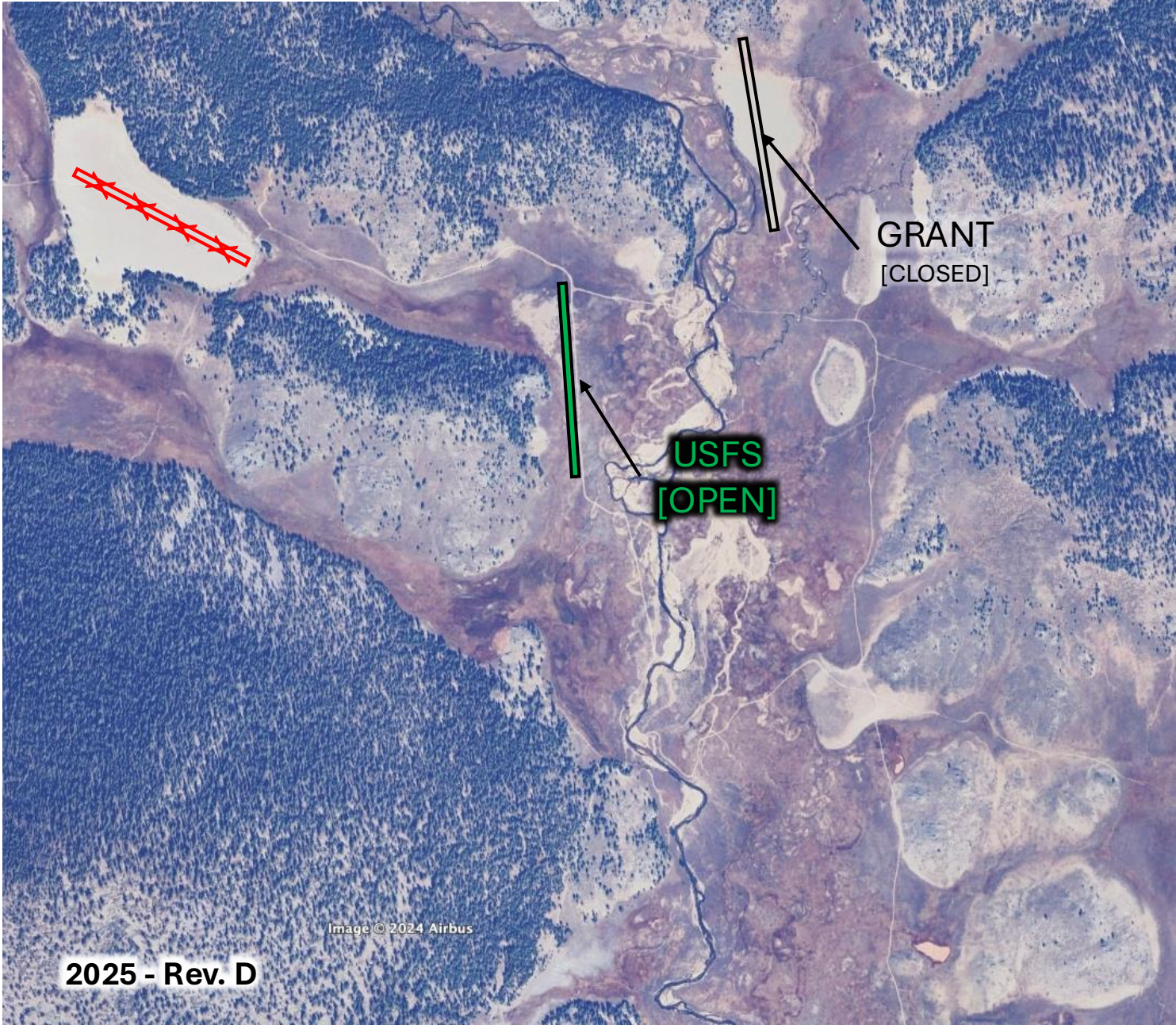




# Monache Grant [CLOSED] – Private, PPR

Elevation: 8000'  
Length: 1700'  
Surface: Dirt/Rock  
Ownership: Private, PPR  
Lat/Lon: 36.225766°  
-118.171779°

Description:  
Very technical strip. Stay on strip, sand bar is soft. Do not land at other strips.

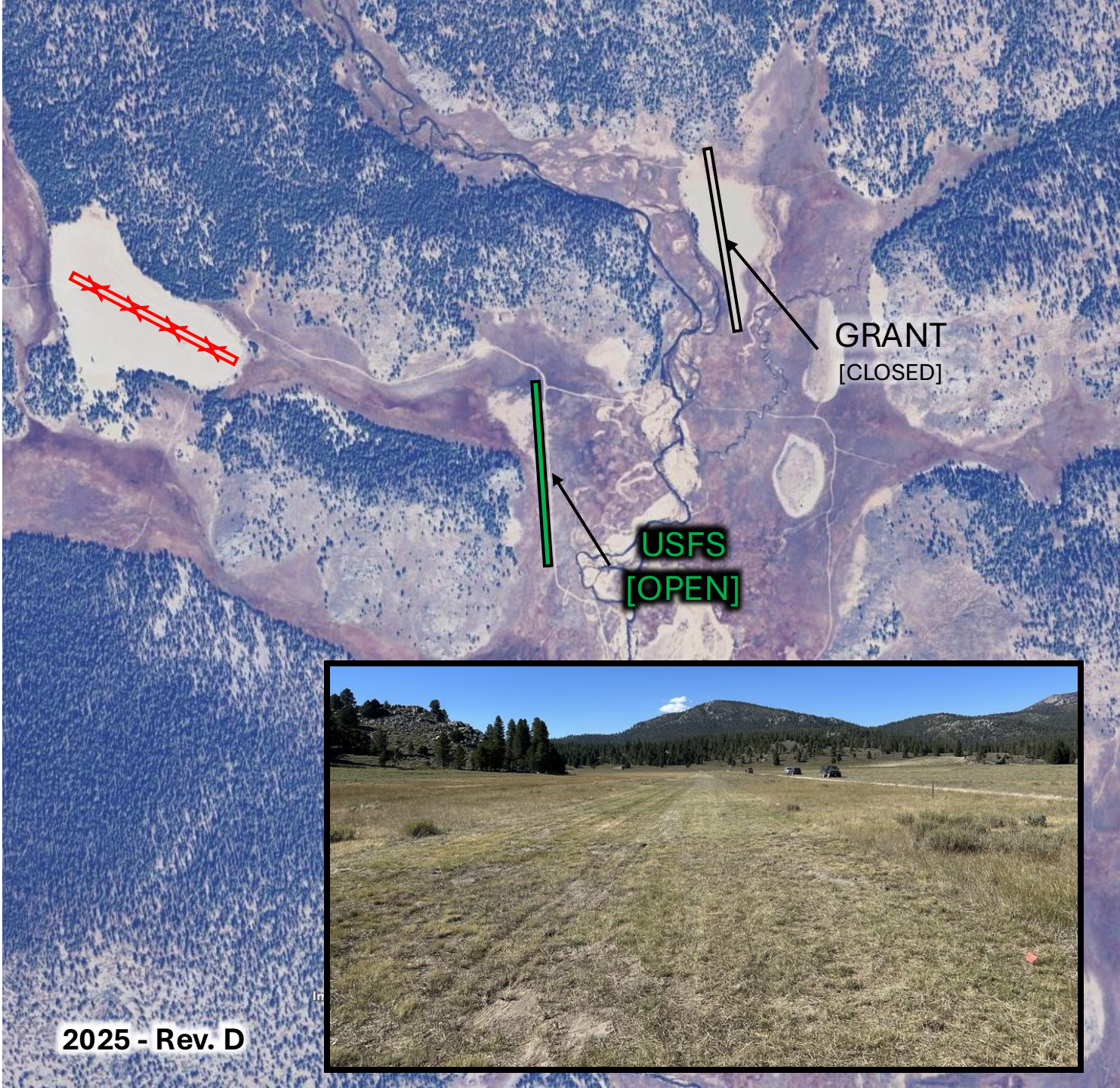




# Monache USFS (L80)

Elevation: 8000'  
Length: 2300'  
Surface: Dirt/Grass  
Ownership: USFS  
Lat/Lon: 36.218371°  
-118.178153°

Description:  
Freshly restored. Still rough surface and soft in places.



2025 - Rev. D





# Mud Dry Lake

Elevation: 5200'  
Length: 10000'  
Surface: Lakebed  
Ownership: BLM  
Lat/Lon: 37.870972°  
-117.105753°



Description:  
Pristine dry lake. Easy spot. Mind that restricted area! And go find some bullets.



2025 - Rev. D





# Olancha – *Private, Conditional*

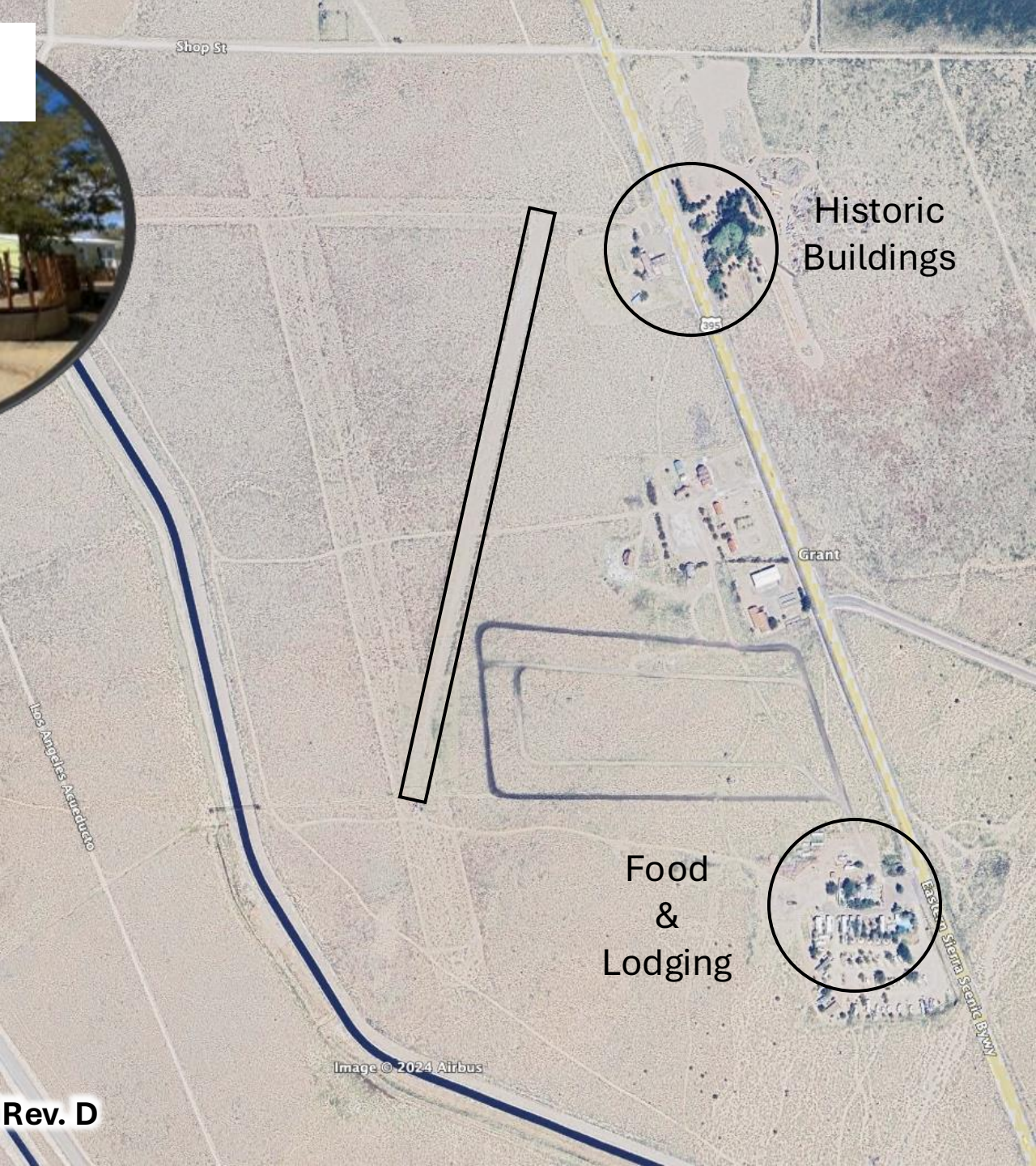
Elevation: 3800'  
Length: 1600'  
Surface: Dirt  
Ownership: Private  
Lat/Lon: 36.255276°  
-117.997902°

## Description:

Historic airstrip with ties to aviation access to the Sierra Nevada airstrips. Current owner runs café and tipi motel. If landing, please visit owner's business.



2025 - Rev. D





# Panamint Springs – *Private, Conditional*

Elevation: 1900'  
Length: 1800'  
Surface: Gravel/Rock  
Ownership: Private  
Lat/Lon: 36.338227°  
-117.467372°



**Panamint Springs Resort** allows customers to use their airstrip. No need to call ahead – *please be sure to only land if you are going to be a customer!*

Services:

- Convenience Store, Car Gas
- Restaurant (Breakfast/Lunch/Dinner)
- Motel/Cabin Rentals and Campground



MOTEL  
RESTAURANT

GAS  
FOOD

PARKING

RUNUP  
PAD

1800' x 50' GRAVEL

← UPHILL

One way strip with no Go-Around. Land to West, takeoff to East.

2025 - Rev. D

© 2016 Google



# Queensland Vineyard – *Private, PPR*

Elevation: 4900'  
Length: 2700'  
Surface: Dirt  
Ownership: Private  
Lat/Lon: 37.674908°  
-118.072319°

Description:  
Bed and Breakfast with an airstrip. Call ahead. Caution power lines at west end. Phone: 888-411-3349

Power Lines



Image © 2024 Airbus

2025 - Rev. D





# Ruby Store

Elevation: 2300'  
Length: 2200'  
Surface: Dirt  
Ownership: BLM  
Lat/Lon: 36.490281°  
-116.419999°

Description:  
Simple dirt strip with Mexican food across the street.



2025 - Rev. D





# Sacatar Meadows – Private, PPR

Elevation: 6400'  
Length: 2200'  
Surface: Dirt  
Ownership: Private, PPR  
Lat/Lon: 35.990305°  
-118.081283°

Description:

Historic airstrip recently re-graded. Access strictly at discretion of owner.



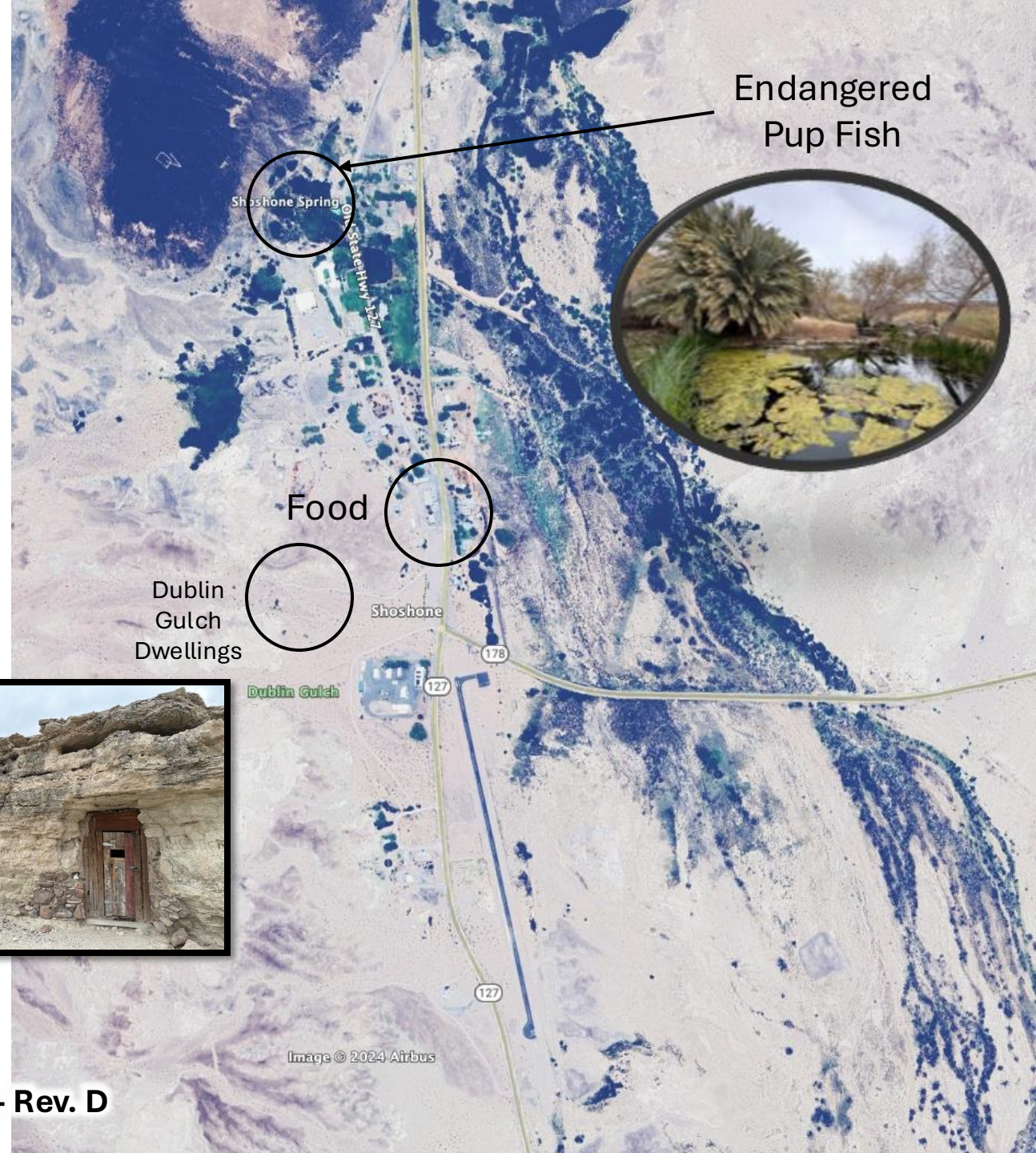
Image © 2024 Airbus



## Shoshone (L61)

Elevation:	1568'
Length:	2400'
Surface:	Asphalt, Good
Ownership:	Inyo County
Lat/Lon:	35.969183° -116.269487°

**Description:**  
Check out the miner dwellings in Dublin Gulch. Food options. See the endangered pup fish.



**2025 - Rev. D**



# Stovepipe Wells (L09)

Elevation: 25'  
Length: 3200'  
Surface: Asphalt  
Ownership: NPS  
Lat/Lon: 36.603944°  
-117.159025°

Description:  
In Death Valley National Park. Lodging and restaurant nearby. No camping at airport.



2025 - Rev. D

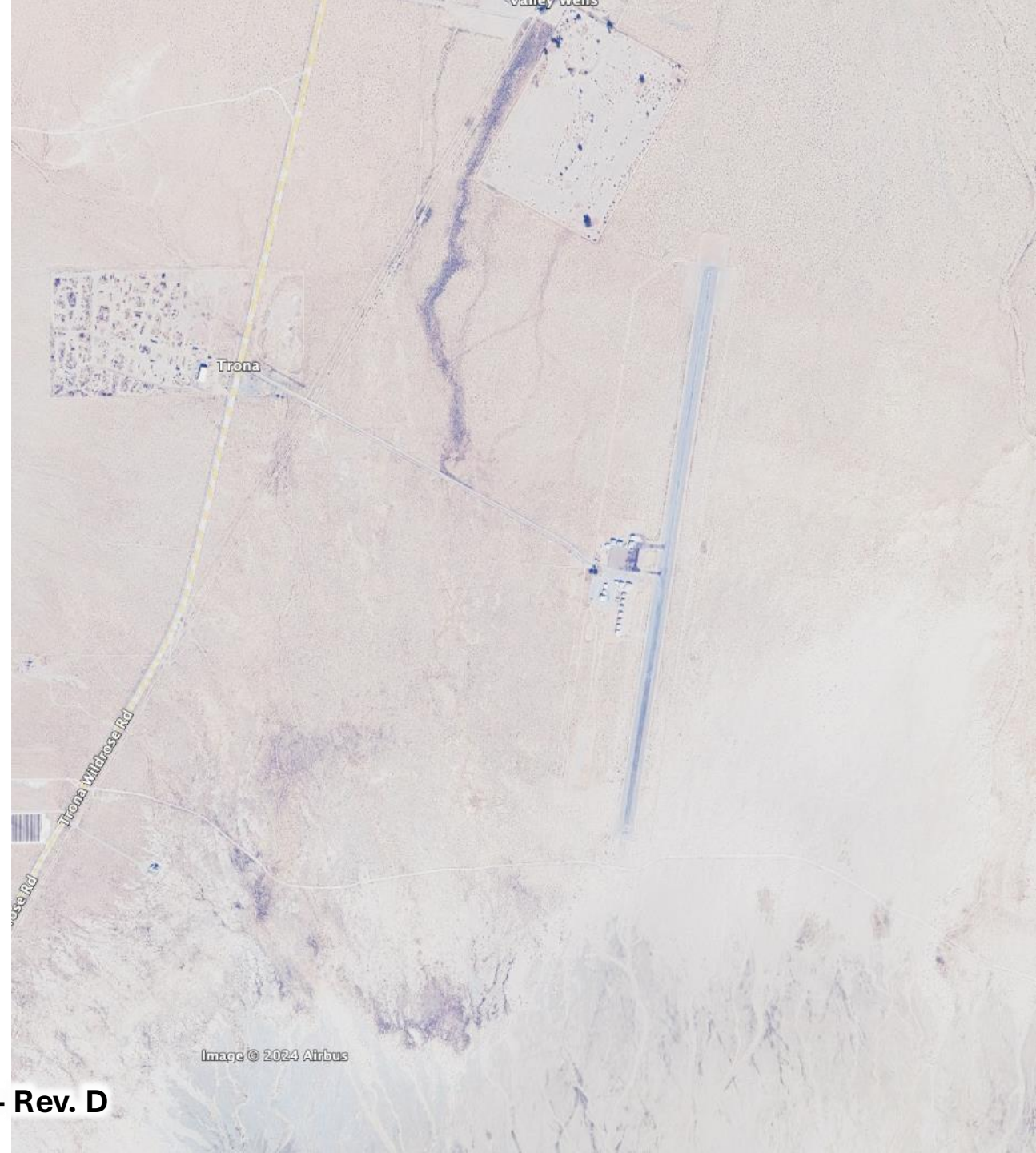




# Trona (L72)

Elevation: 1718'  
Length: 5900'  
Surface: Asphalt, OK  
Ownership: Inyo County  
Lat/Lon: 35.812027°  
-117.340703°

Description:  
Easy public airport. No fuel. Snack in pilot lounge.  
**Sign the logbook!**





# Trona Pinnacles

Elevation: 1800'  
Length: 1800'  
Surface: Gravel/Rock  
Ownership: BLM  
Lat/Lon: 35.623920°  
-117.375430°

Description:  
Off-airport destination. Land on dirt  
access road. Big tires highly advised.



2025 - Rev. D

Google



# Tule

Elevation: 7100'  
Length: 1700'  
Surface: Dirt  
Ownership: BLM  
Lat/Lon: 37.382139°  
-117.642179°

Description:  
Remote high elevation airstrip in a stunning setting.  
Uphill landing, downhill takeoff.



2025 - Rev. D





# X-15

Elevation: 3200'  
Length: 1500'  
Surface: Dirt, Not-Smooth  
Ownership: BLM  
Lat/Lon: 35.430150°  
-117.598520°

Description:  
Small dry lake with lots of campers at times.  
Land along two-track in middle.



2025 - Rev. D